

Monessen Street, Fayette County - 30+/- acres
Monessen Street
Belle Vernon, PA 15012

\$149,900
30± Acres
Fayette County



Monessen Street, Fayette County - 30+/- acres
Belle Vernon, PA / Fayette County

SUMMARY

Address

Monessen Street

City, State Zip

Belle Vernon, PA 15012

County

Fayette County

Type

Hunting Land, Recreational Land, Undeveloped Land

Latitude / Longitude

40.121856 / -79.836942

Taxes (Annually)

1160

Acreage

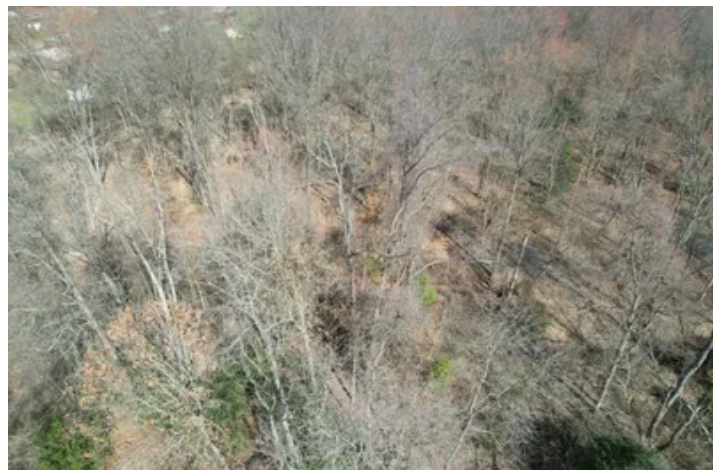
30

Price

\$149,900

Property Website

<https://www.mossyoakproperties.com/property/monessen-street-fayette-county-30-acres-fayette-pennsylvania/52781/>



Monessen Street, Fayette County - 30+/- acres
Belle Vernon, PA / Fayette County

PROPERTY DESCRIPTION

30+/- acres for sale in Belle Vernon, PA. This 30-acre tract consists of mostly flat, wooded acreage. The property boasts access from multiple locations and an impressive number of deer and turkey. Perfectly located minutes from Interstate 70, Toll Road 43 and Belle Vernon dining and shopping.

Features Of This Property Include:

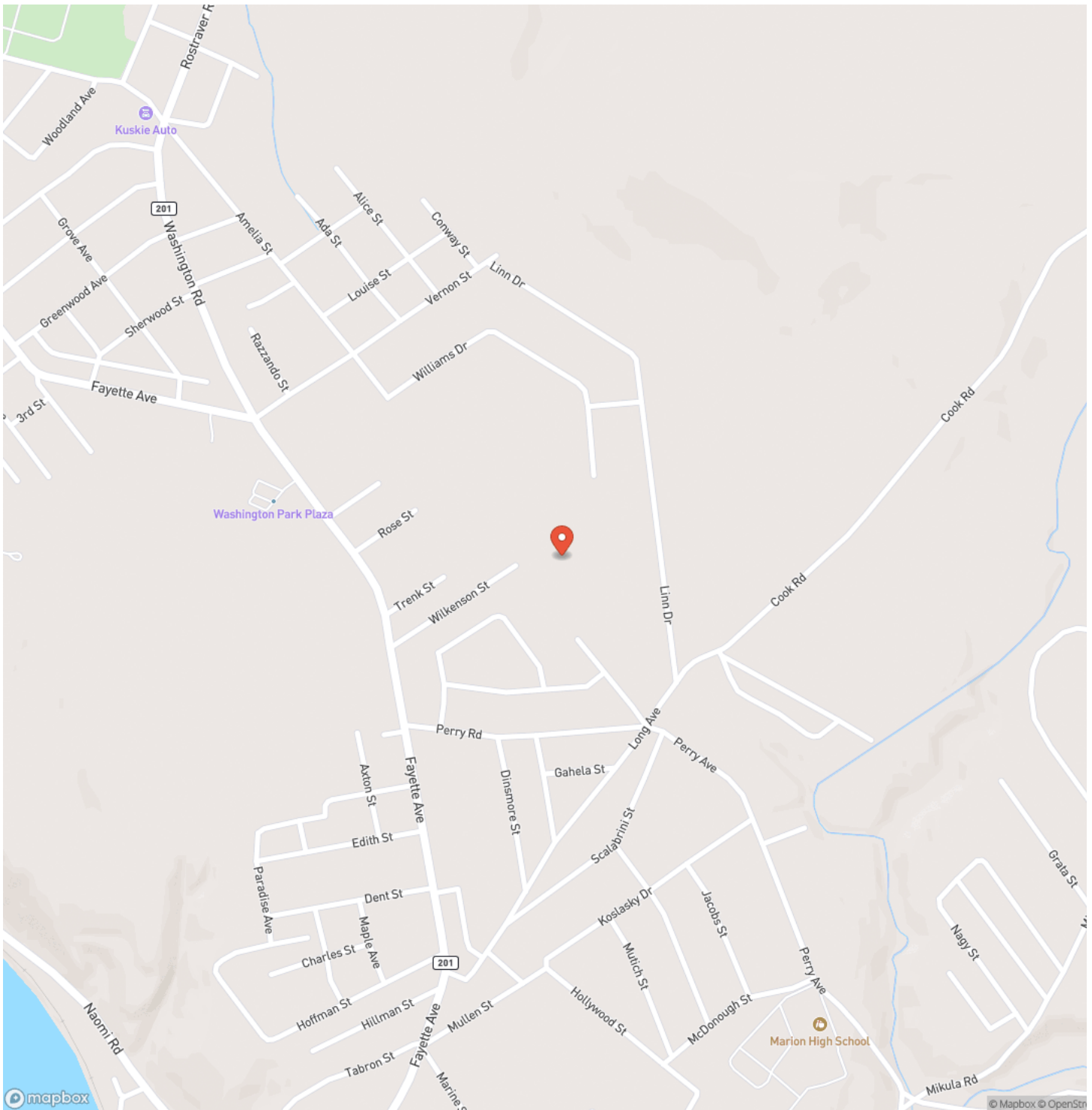
- Mostly wooded acreage
- Potential building sites
- Minutes from Interstate 70 and Toll Road 43
- A short drive to New Stanton, Uniontown and Pittsburgh
- Excellent access from Monessen Street and Amelia Street
- Flat terrain
- GPS coordinates are 40.121856, -79.836942
- Mineral rights reserved
- Belle Vernon School District



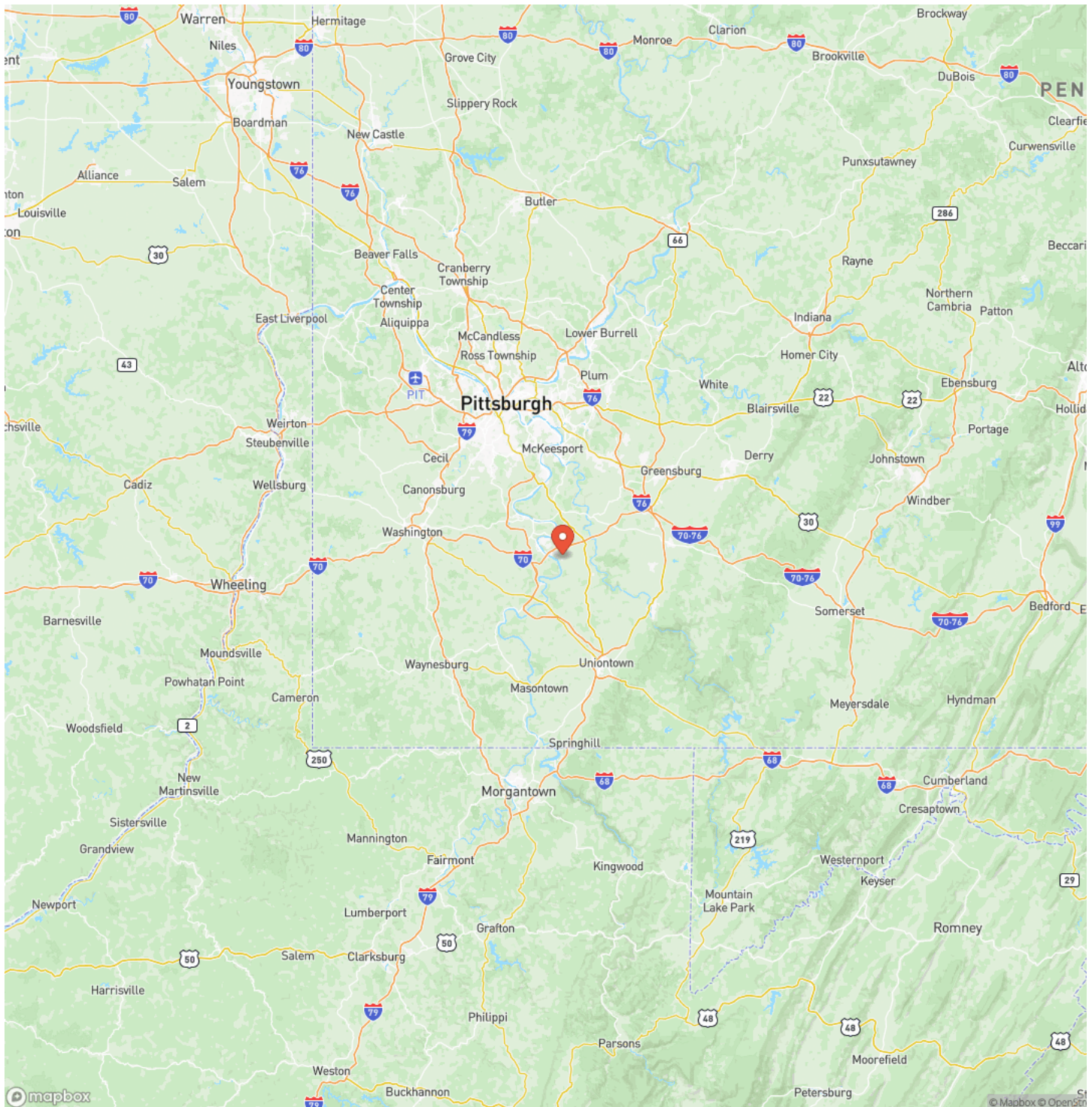
Monessen Street, Fayette County - 30+/- acres
Belle Vernon, PA / Fayette County



Locator Map



Locator Map



Satellite Map



Monessen Street, Fayette County - 30+/- acres
Belle Vernon, PA / Fayette County

LISTING REPRESENTATIVE

For more information contact:



Representative

Benjamin Beck

Mobile

(724) 747-5979

Office

(724) 747-5979

Email

bbeck@mossyoakproperties.com

Address

511 Skyline Dr.

City / State / Zip

Belle Vernon, PA 15012

NOTES



MORE INFO ONLINE:

mossyoakproperties.com

This image shows a blank sheet of white paper with horizontal ruling lines. The lines are evenly spaced and run across the width of the page. There are no margins, text, or other markings on the paper.



DISCLAIMERS

Information in this brochure is provided solely for information purposes and does not constitute an offer to sell or advertise real estate outside the states in which broker or agent licensed. The information presented has been obtained from sources deemed to be reliable, but is not guaranteed or warranted by the agent, broker, or the sellers of these properties. This offering is subject to errors, omissions, prior sale, price change, correction or withdrawal from the market without notice. All references to age, square footage, income, expenses, acreage, carrying capacity, and land classification, etc. are approximate. Prospective buyers are chargeable with and expected to conduct their own independent investigation of the information and the property and to rely only on those results. Sellers reserve the right to accept or reject any and all offers without liability to any buyer or cooperating broker.

Maps are provided for illustration purposes only, the accuracy is not warranted. Parcels on interactive maps are not adjusted to match aerial backgrounds. This information is for reference purposes only and is not a legal document. Data maps contain errors. The seller and seller's agent are making known to all potential buyers that there may be variations between the location of the existing fence lines and the legal description of the deeded property. Seller and seller's agent make no warranties with regard to the location of the fence lines in relationship to the deeded property lines, nor does the Seller make any warranties or representations with regard to the specific acreage contained within the fenced property lines. Seller is selling the property in an "as is" condition, which includes the location of the fences as they exist. Boundaries shown on the accompanying maps are approximate, based on county parcel data. The maps are not to scale. The accuracy of the maps is not guaranteed. Prospective buyers are encouraged to verify fence lines, deeded property lines and acreages using a licensed surveyor at their own expense.



Mossy Oak Properties Pennsylvania Land Professionals

511 Skyline Dr.
Belle Vernon, PA 15012
(724) 678-1232
mossyOakproperties.com

