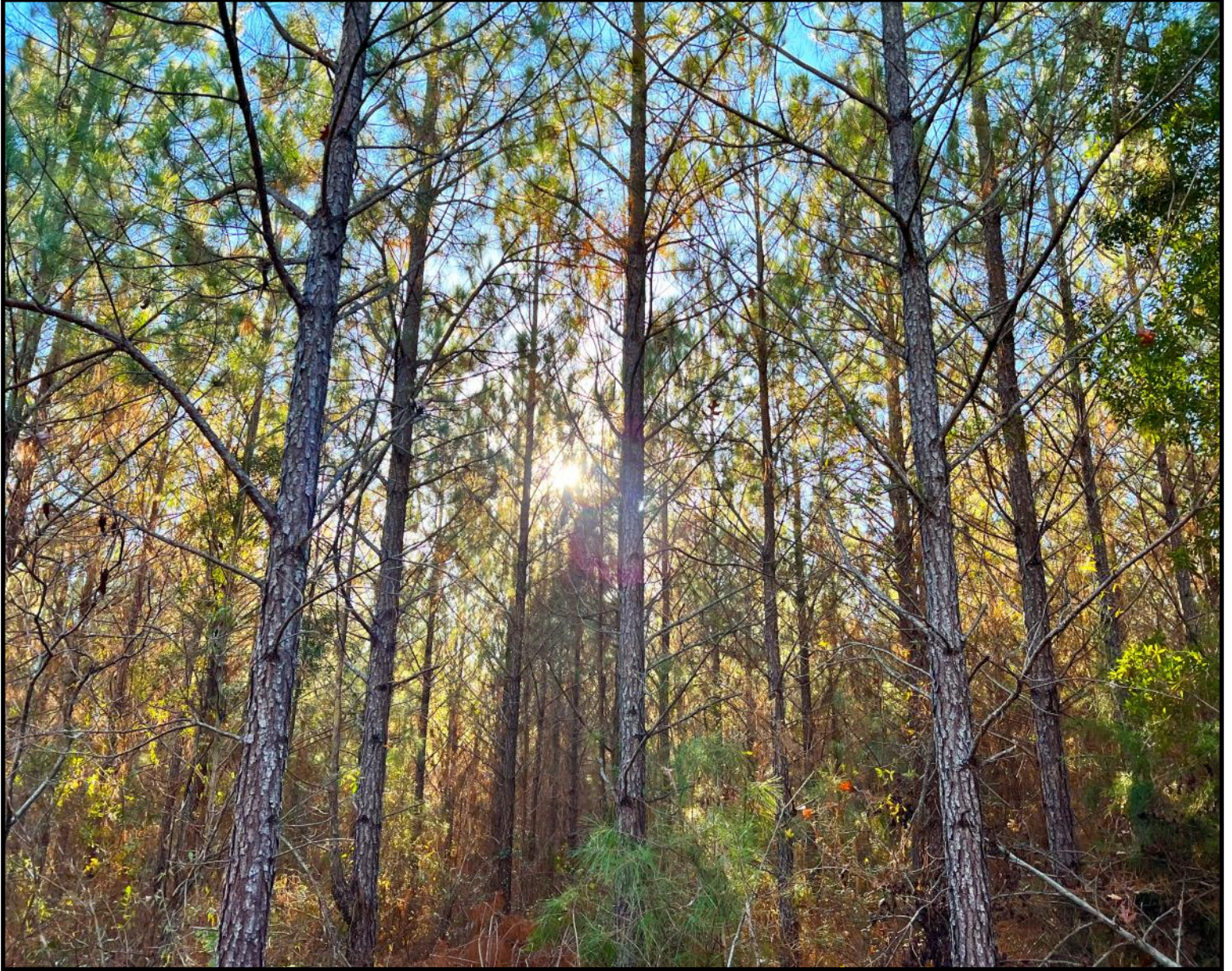


#29-116 Weoka Farm 39

**39+/- Beautiful Acres - Located in the Highly Desirable
Weoka Community of Elmore County, Alabama.
Offered at \$214,500.**



**Eric Leisy, ALC, GRI
Land Broker
Eric@GreatSouthernLand.Com
334-657-6707**

**GREAT SOUTHERN
LAND**
Alabama's Trusted Land Company Since 1974

GreatSouthernLand.com

WEOKA FARM 39

If you're looking for the perfect place to settle down, build your dream home or weekend get-a-way, and enjoy the peacefulness of country living, then this 39-acre property in Weoka, Alabama is just what you need. With a mix of pine plantation and mature hardwoods, this land is an ideal hunting ground for deer and turkey, providing you with endless opportunities to explore and enjoy the great outdoors. The privacy that comes with this property is an added bonus, allowing you to escape from the hustle and bustle of city life. And yet, you're still close enough to enjoy all the conveniences of the city. Whether you want to raise a few chickens or plant a bountiful vegetable garden, this property offers plenty of room to spread out and make your own. And when the sun goes down, you'll be treated to a spectacular view of the stars above. Don't miss out on this rare opportunity to own your own piece of paradise!

Please call me, Eric Leisy, to schedule a tour today. 334-657-6707.

WHY BUY LAND?

In light of what is going on in the world today there has never been a better time to buy land. The purchase of land provides a safe haven for your investment. Other attributes of land include: 1) Land can be a great hedge against inflation, 2) Land does not fluctuate erratically like the stock market, 3) Land will ALWAYS be there for tomorrow. 4) Land provides a healthy environment away from the masses and can even provide food for your family.



There are some beautiful hardwood areas on this land. The deer and the turkey love these areas too!

