

7 Acres | High Hill Road  
High Hill Road  
Schulenburg, TX 78956

**\$209,275**  
7.610± Acres  
Fayette County



**MORE INFO ONLINE:**  
[www.homelandprop.com](http://www.homelandprop.com)

**7 Acres | High Hill Road**  
**Schulenburg, TX / Fayette County**

---

**SUMMARY**

**Address**

High Hill Road

**City, State Zip**

Schulenburg, TX 78956

**County**

Fayette County

**Type**

Farms, Undeveloped Land

**Latitude / Longitude**

29.716312 / -96.906618

**Taxes (Annually)**

6

**Acreage**

7.610

**Price**

\$209,275

**Property Website**

<https://homelandprop.com/property/7-acres-high-hill-road-fayette-texas/77847/>



**MORE INFO ONLINE:**

[www.homelandprop.com](http://www.homelandprop.com)

7 Acres | High Hill Road  
Schulenburg, TX / Fayette County

---

### **PROPERTY DESCRIPTION**

---

This beautiful 7.618 acre tract, located just north of Schulenburg, offers open pasture land, ideal for a variety of uses. The property is fully fenced and cross-fenced, making it well suited for cattle grazing or other agricultural pursuits. With blacktop road access and electricity already available on site, it's ready for your vision. A water well will be needed for water supply. Schulenburg is a charming small town, rich in German and Czech heritage, known for its welcoming community, historic Painted Churches and scenic countryside. Conveniently situated between Houston, Austin and San Antonio, it offers the perfect blend of rural tranquility and easy access to city amenities. Whether you're looking to establish a homestead, enjoy country living, or invest in land, Schulenburg is a great place to call home.

---

**Utilities:** Electricity available

**Utility Providers:** TXU energy

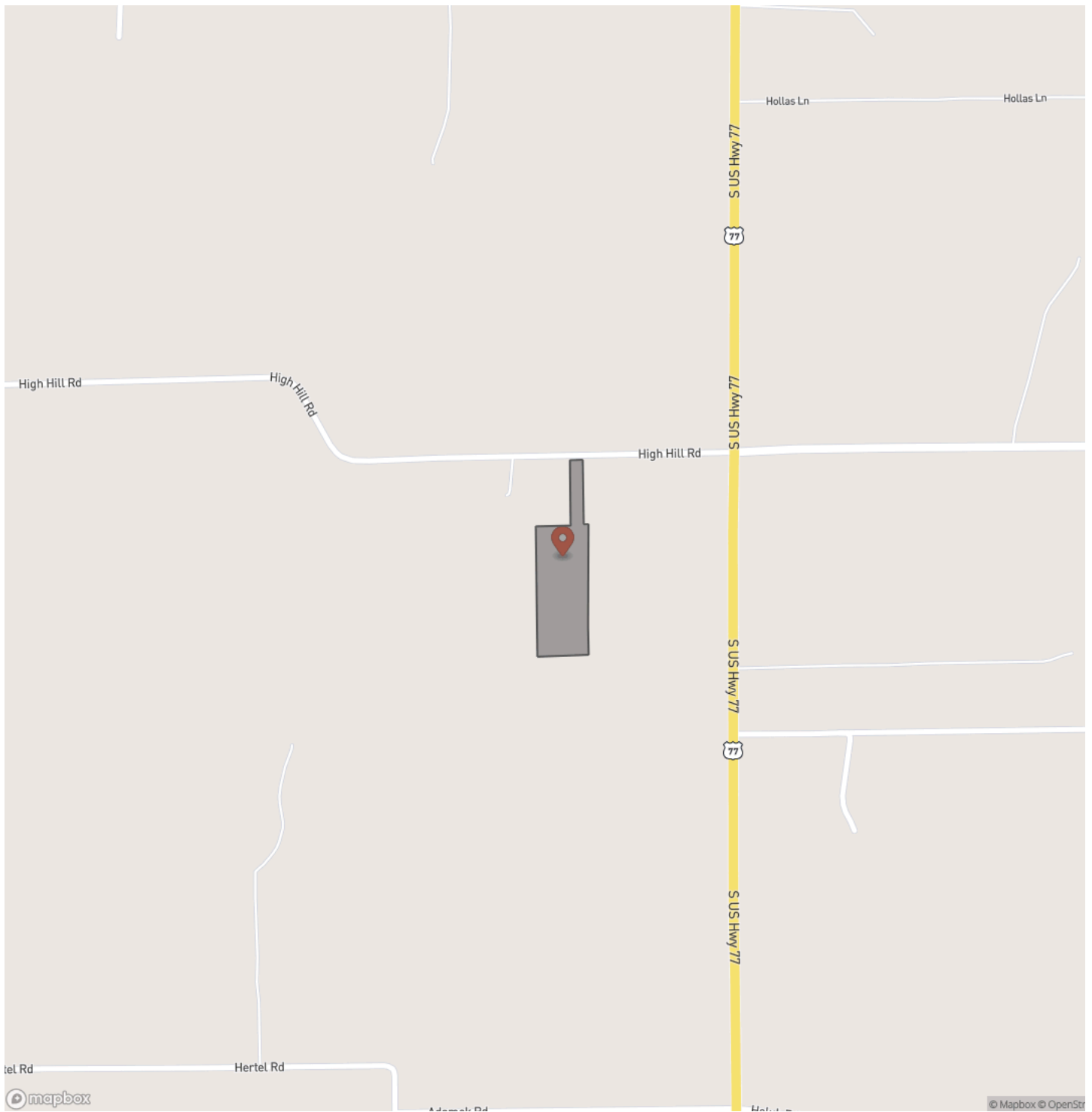


**MORE INFO ONLINE:**  
[www.homelandprop.com](http://www.homelandprop.com)

7 Acres | High Hill Road  
Schulenburg, TX / Fayette County

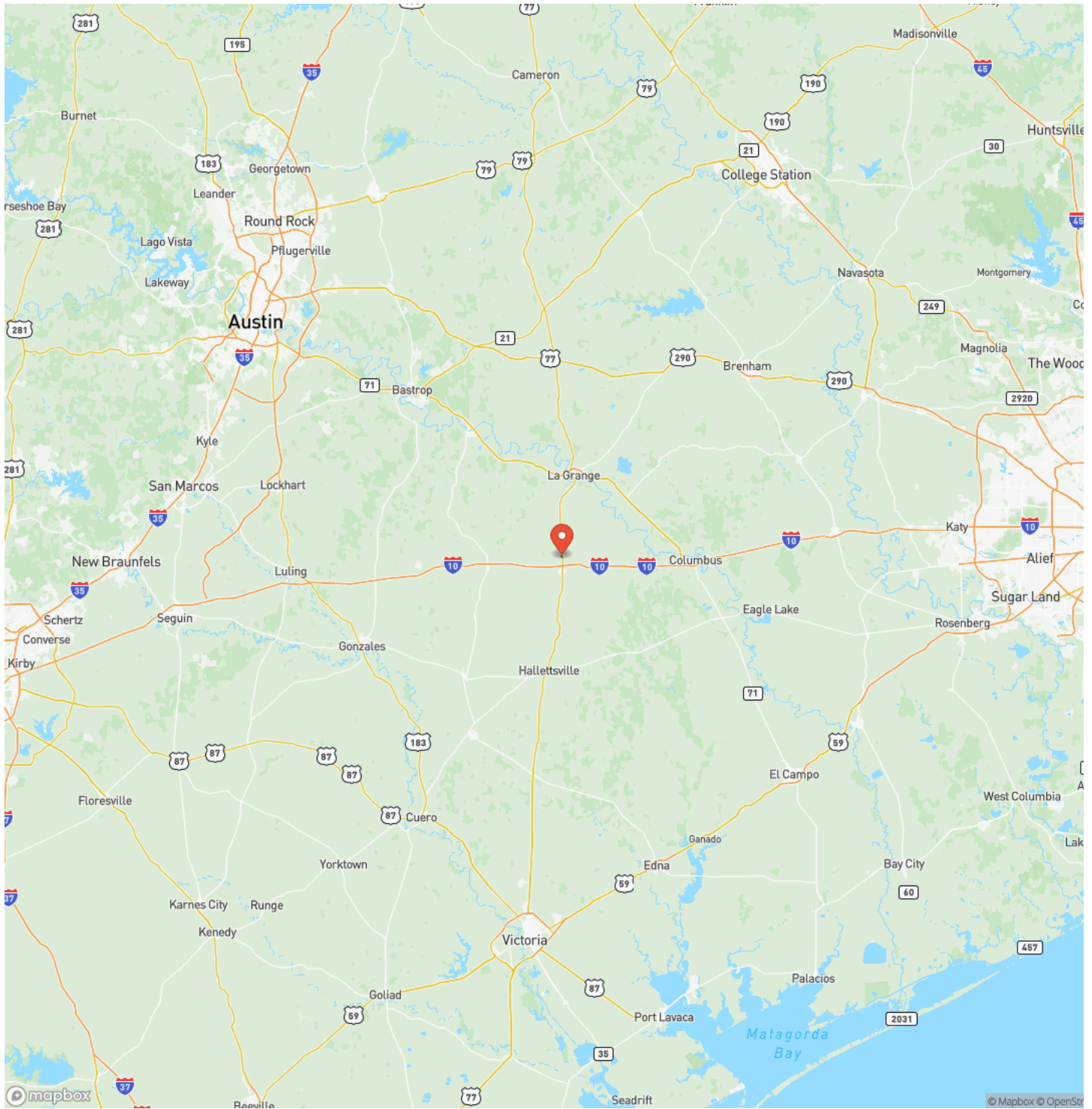


# Locator Map

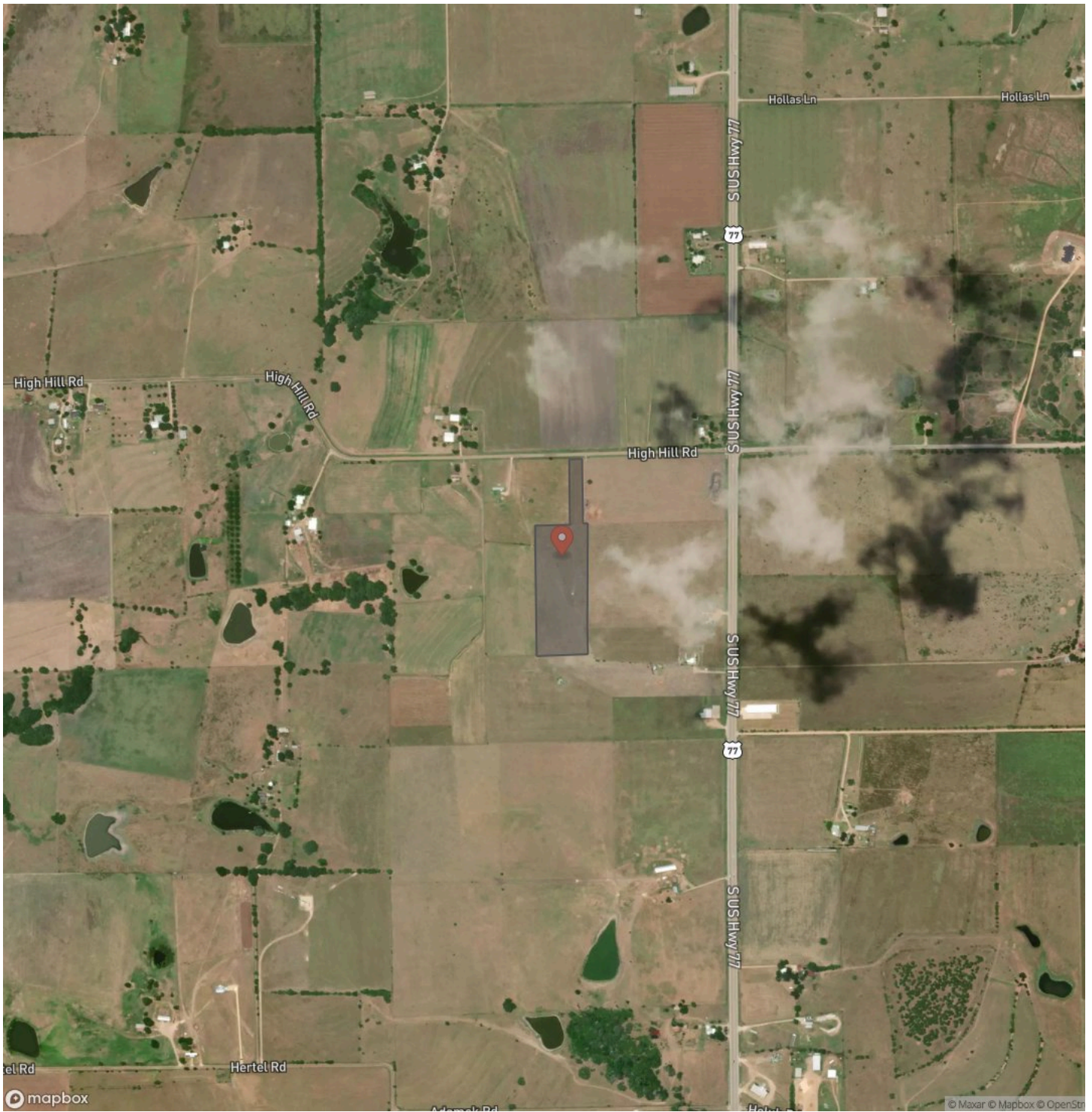


**MORE INFO ONLINE:**  
[www.homelandprop.com](http://www.homelandprop.com)

# Locator Map



## Satellite Map









## **DISCLAIMERS**

Information in this brochure is provided solely for information purposes and does not constitute an offer to sell or advertise real estate outside the states in which broker or agent licensed. The information presented has been obtained from sources deemed to be reliable, but is not guaranteed or warranted by the agent, broker, or the sellers of these properties. This offering is subject to errors, omissions, prior sale, price change, correction or withdrawal from the market without notice. All references to age, square footage, income, expenses, acreage, carrying capacity, and land classification, etc. are approximate. Prospective buyers are chargeable with and expected to conduct their own independent investigation of the information and the property and to rely only on those results. Sellers reserve the right to accept or reject any and all offers without liability to any buyer or cooperating broker.

Maps are provided for illustration purposes only, the accuracy is not warranted. Parcels on interactive maps are not adjusted to match aerial backgrounds. This information is for reference purposes only and is not a legal document. Data maps contain errors. The seller and seller's agent are making known to all potential buyers that there may be variations between the location of the existing fence lines and the legal description of the deeded property. Seller and seller's agent make no warranties with regard to the location of the fence lines in relationship to the deeded property lines, nor does the Seller make any warranties or representations with regard to the specific acreage contained within the fenced property lines. Seller is selling the property in an "as is" condition, which includes the location of the fences as they exist. Boundaries shown on the accompanying maps are approximate, based on county parcel data. The maps are not to scale. The accuracy of the maps is not guaranteed. Prospective buyers are encouraged to verify fence lines, deeded property lines and acreages using a licensed surveyor at their own expense.



**MORE INFO ONLINE:**

[www.homelandprop.com](http://www.homelandprop.com)

---

**HomeLand Properties, Inc.**  
1600 Normal Park Dr.  
Huntsville, TX 77340  
(936) 295-2500  
[www.homelandprop.com](http://www.homelandprop.com)

---



**MORE INFO ONLINE:**  
[www.homelandprop.com](http://www.homelandprop.com)