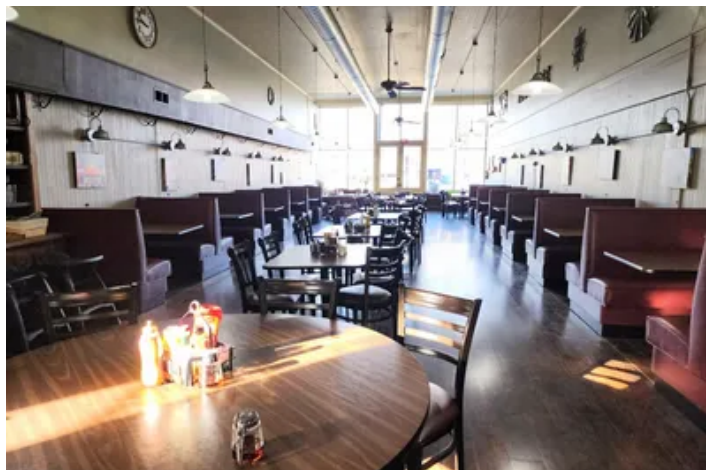


Commercial Building for sale on historical square
110 W. Lafayette St.
Rushville, IL 62681

\$250,000
0.180± Acres
Schuyler County



**Commercial Building for sale on historical square
Rushville, IL / Schuyler County**

SUMMARY

Address

110 W. Lafayette St.

City, State Zip

Rushville, IL 62681

County

Schuyler County

Type

Commercial

Latitude / Longitude

40.120306 / -90.562939

Dwelling Square Feet

9696

Bedrooms / Bathrooms

-- / 1

Acreage

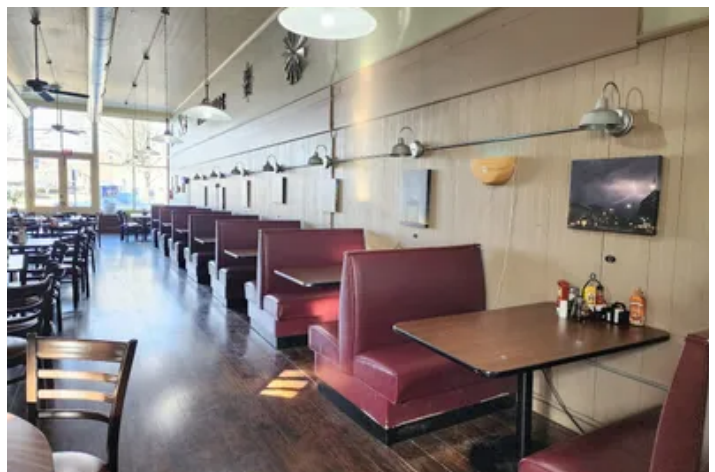
0.180

Price

\$250,000

Property Website

<https://legacylandco.com/property/commercial-building-for-sale-on-historical-square-schuyler-illinois/76131/>



Commercial Building for sale on historical square Rushville, IL / Schuyler County

PROPERTY DESCRIPTION

Turnkey restaurant for sale, located in historic downtown square. Currently known as Southside Cafe. This location boasts 9,696 square feet of space. 3,624 sq ft. is the main floor dining area and kitchen. 3,624 sq. ft. on the 2nd story, is a large open area currently used for storage. 2,448 sq ft. another storage area not temperature controlled. Building has an employee bathroom and a two stall restroom. Building was built in 1880 and still has a lot of original woodwork, doors and unique features. Utilities avg. \$800 mo.

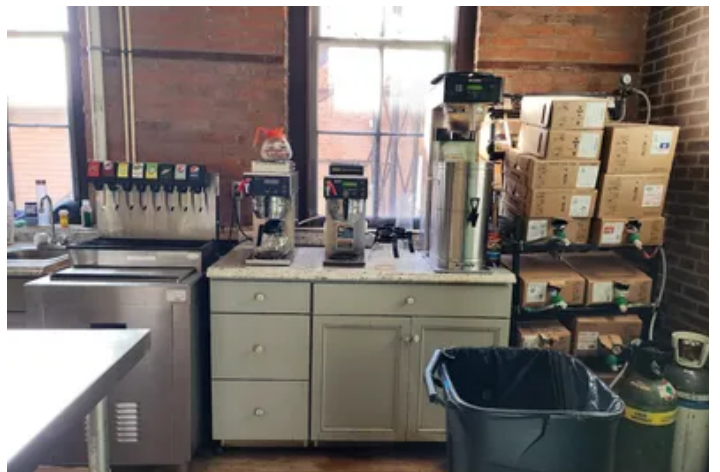
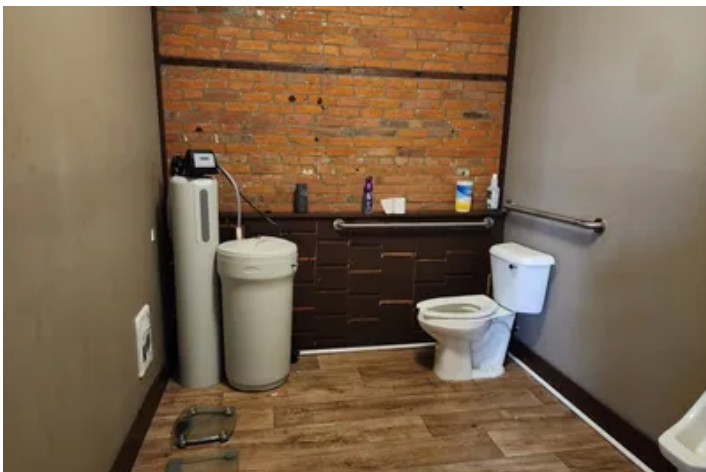
Building comes with all trade fixtures:

12- booths, 8 -tables, 60- chairs, 3- deep fryers, 1-3 door refrigerator, 1-10 range stove, 1 -flat top range, 1- 3 foot grill, 2-hot bars, 2- refrigerated sandwich stations, 2-toasters, 1- salad bar (no top) 1- standing freezer, 2- chest freezers, 1- small chest freezer, ice machine, 1-Square register system, all dishes, flatware, and pots & pans.

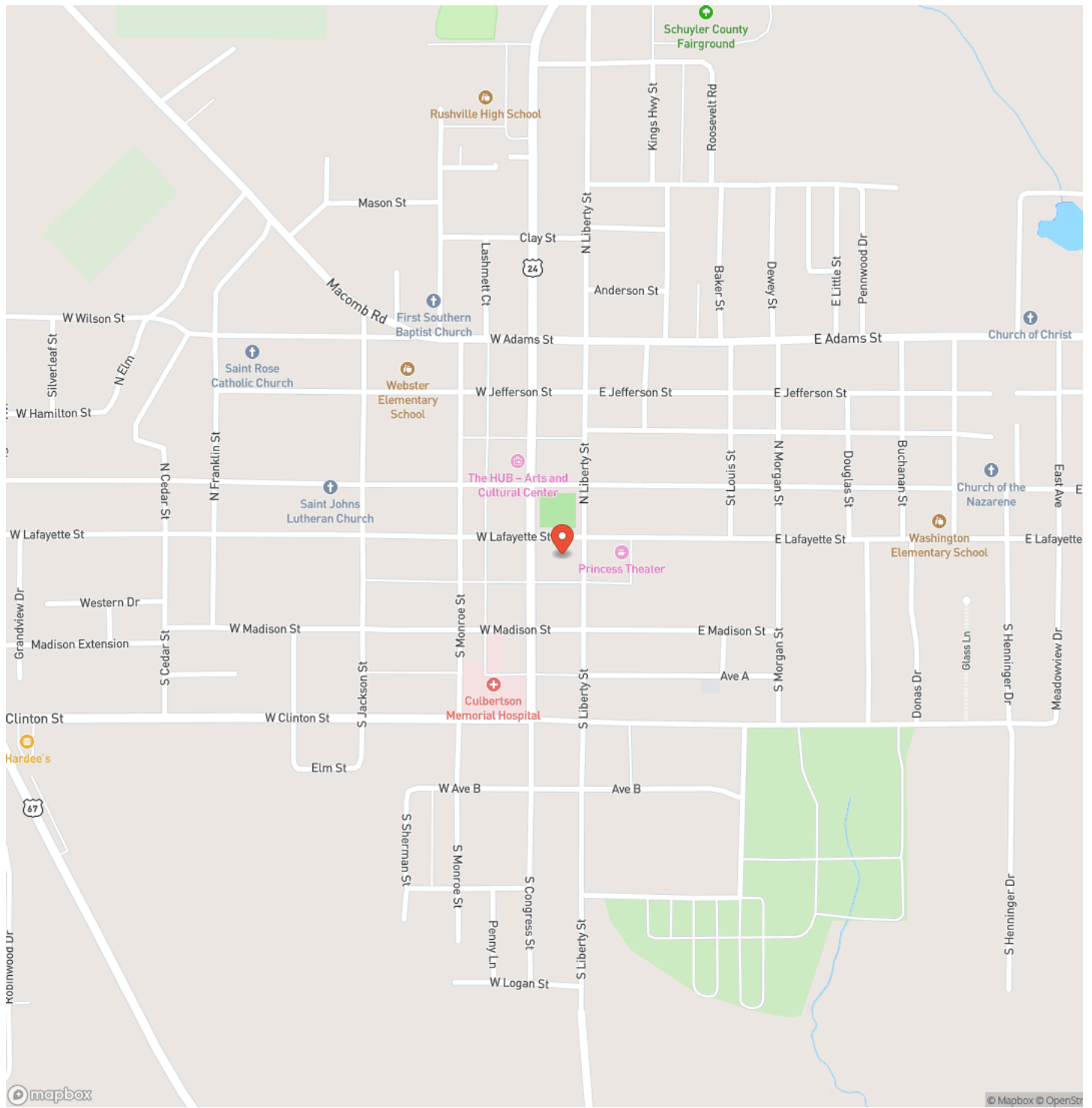
Rented: Dishwasher

coffee machines : supplied by distributor

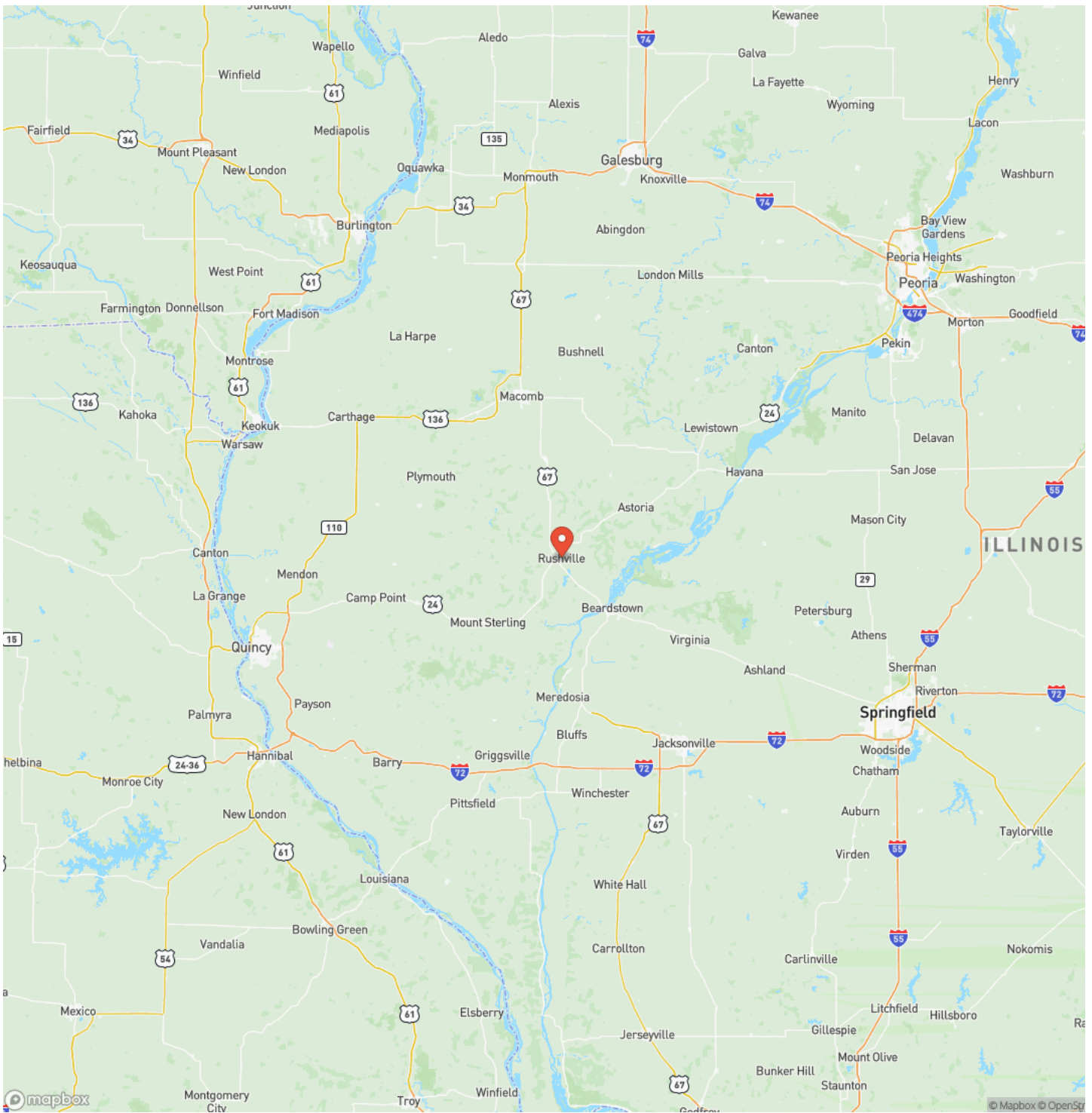
Commercial Building for sale on historical square
Rushville, IL / Schuyler County



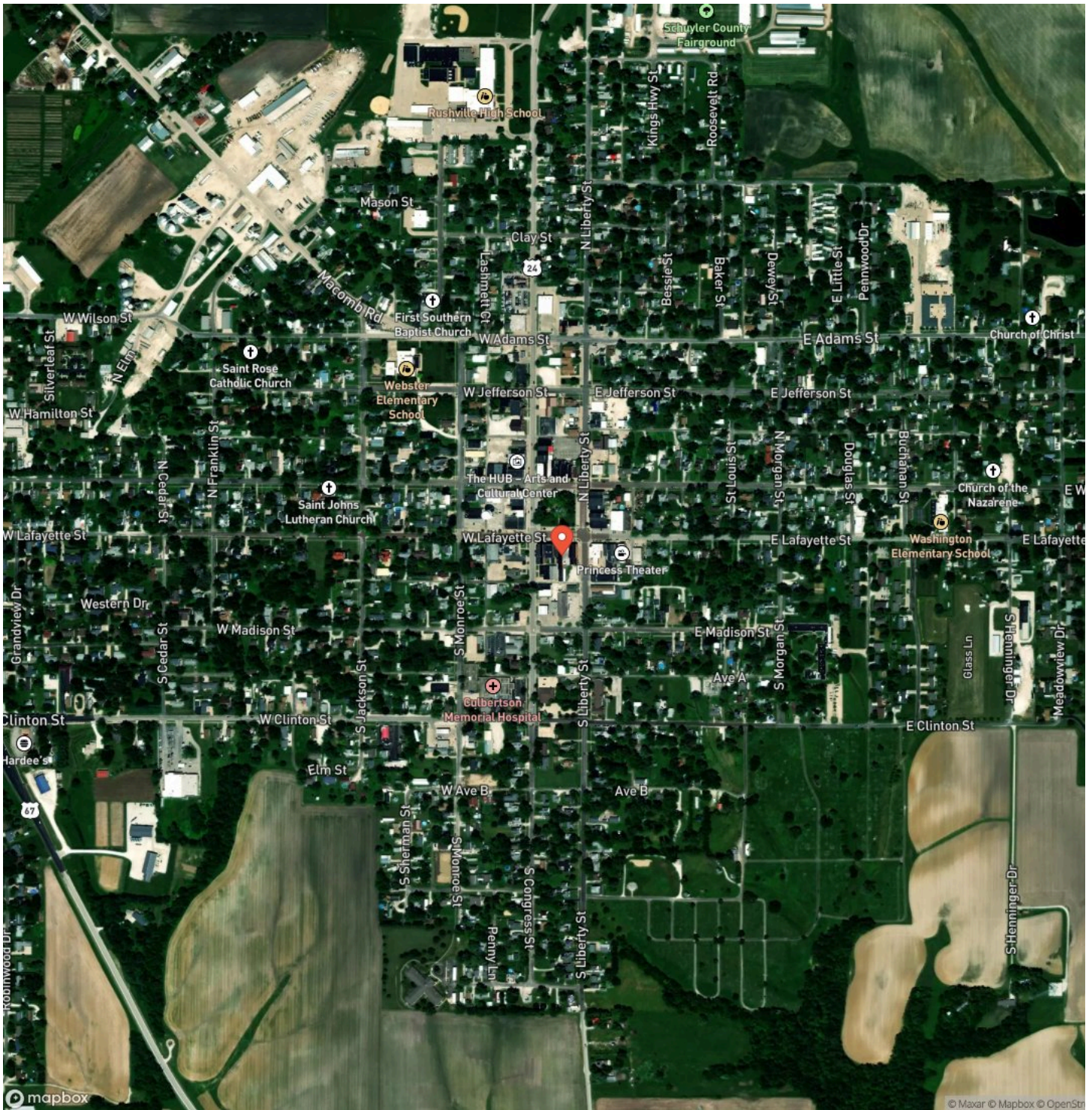
Locator Map



Locator Map



Satellite Map



DISCLAIMERS

Information in this brochure is provided solely for information purposes and does not constitute an offer to sell or advertise real estate outside the states in which broker or agent licensed. The information presented has been obtained from sources deemed to be reliable, but is not guaranteed or warranted by the agent, broker, or the sellers of these properties. This offering is subject to errors, omissions, prior sale, price change, correction or withdrawal from the market without notice. All references to age, square footage, income, expenses, acreage, carrying capacity, and land classification, etc. are approximate. Prospective buyers are chargeable with and expected to conduct their own independent investigation of the information and the property and to rely only on those results. Sellers reserve the right to accept or reject any and all offers without liability to any buyer or cooperating broker.

Maps are provided for illustration purposes only, the accuracy is not warranted. Parcels on interactive maps are not adjusted to match aerial backgrounds. This information is for reference purposes only and is not a legal document. Data maps contain errors. The seller and seller's agent are making known to all potential buyers that there may be variations between the location of the existing fence lines and the legal description of the deeded property. Seller and seller's agent make no warranties with regard to the location of the fence lines in relationship to the deeded property lines, nor does the Seller make any warranties or representations with regard to the specific acreage contained within the fenced property lines. Seller is selling the property in an "as is" condition, which includes the location of the fences as they exist. Boundaries shown on the accompanying maps are approximate, based on county parcel data. The maps are not to scale. The accuracy of the maps is not guaranteed. Prospective buyers are encouraged to verify fence lines, deeded property lines and acreages using a licensed surveyor at their own expense.

Legacy Land Co LLC
903 Liberty St
Covington, IN 47932
(765) 585-8207
