

# Home Options Selection Sheet



# Size: 4 Bed

## The Passport

1,941 SQF | 4 bed / 3 bath | 64' L x 30.4' W



This elegant spacious double wide is designed for comfort & affordability.

With an efficient layout in 1,941 SQF, this home has a stylish kitchen with an island perfect for gatherings.

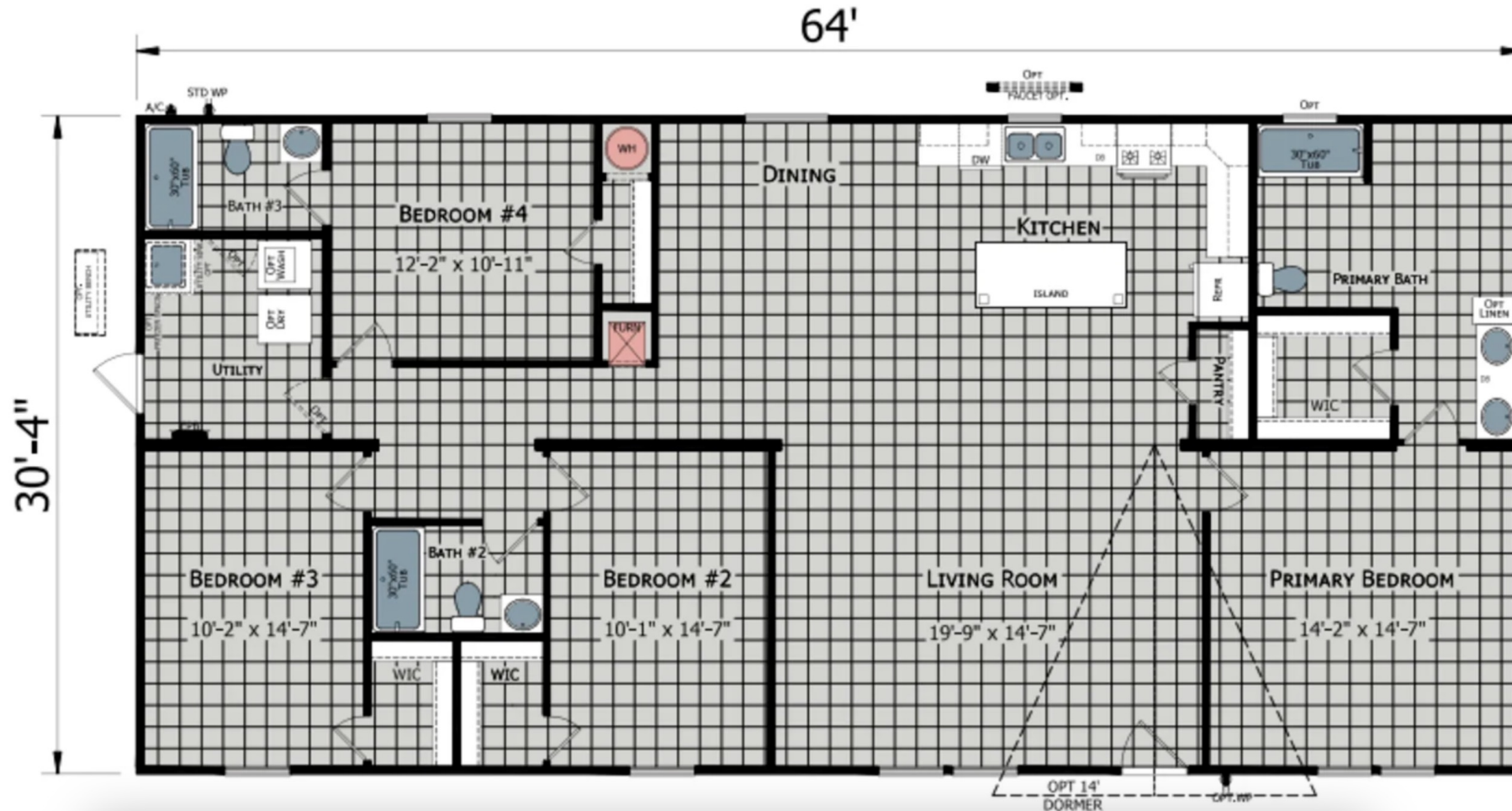
Retreat to the primary bathroom featuring a luxurious soaker tub and a walk-in shower.



# Size: 4 Bed

## The Passport

1,941 SQF | 4 bed / 3 bath | 64' L x 30.4' W



# Size: 4 Bed

## The Ranch

2,356 SQF | 4 bed / 3 bath | 76' L x 31' W



This home has it all!

Tons of room, high end finishes and design, and a beautiful floorplan.

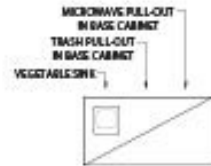
Enjoy the open kitchen that connects with the living area, a full sized laundry room, coffered ceilings, and tons of natural light.



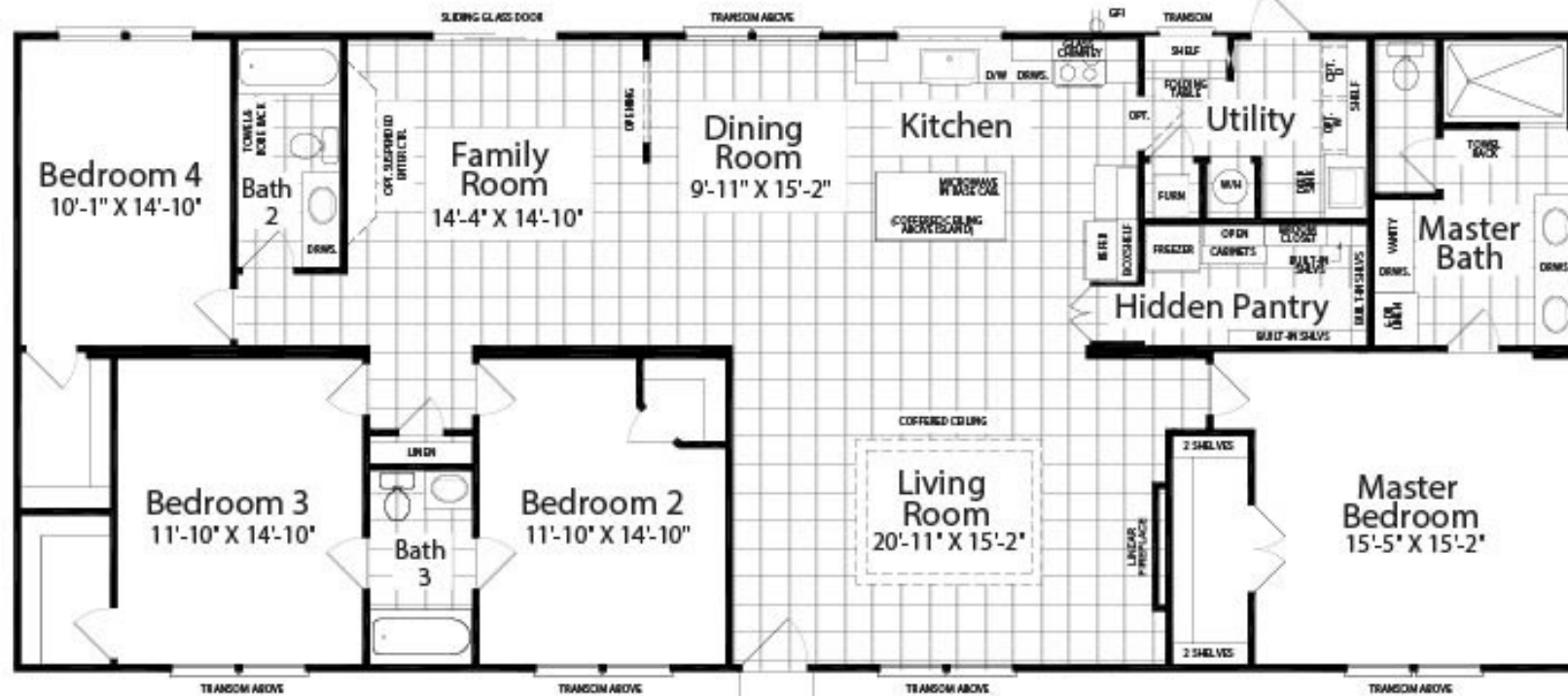
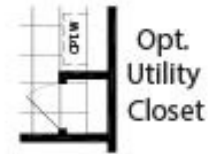
# Size: 4 Bed

## The Ranch

2,356 SQF | 4 bed / 3 bath | 76' L x 31' W



Opt. Culinary Cabinet



Opt. Master Bath

# Size: 5 Bed

## The Tracker

2,001 SQF | 5 bed / 3 bath | 76' L x 28' W



This family sized double wide is loaded with features!

Featuring 5 bedrooms and 3 bathrooms, with a master bedroom separated by a spacious living room.

This home has ample space in the kitchen/dining areas with a full-size utility room.

Enjoy a full 2,001 SQF of comfort!



# Size: 5 Bed



## The Tracker

2,001 SQF | 5 bed / 3 bath | 76' L x 28' W

