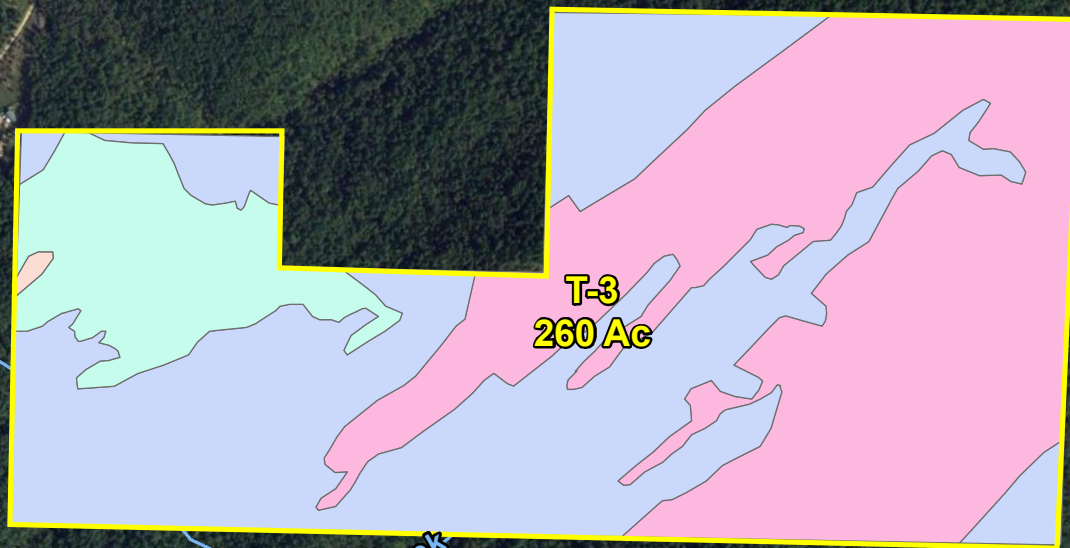


# Legend

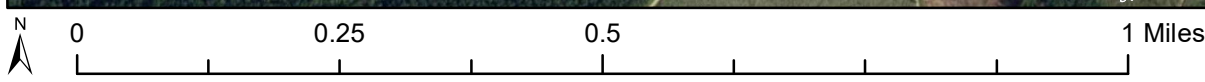
## Stand

### TYPE

- Clearcut
- Mixed
- Mixed-InOp
- Pine



Sources: Esri, HERE, Garmin, USGS, Intermap, INCREMENT P, NRCan, Esri Japan, METI, Esri China (Hong Kong), Esri Korea, Esri (Thailand), NGCC, (c) OpenStreetMap contributors, and the GIS User Community, Source: Esri, USDA FSA



Various Properties south of Clayton, Oklahoma

For illustration purposes only.