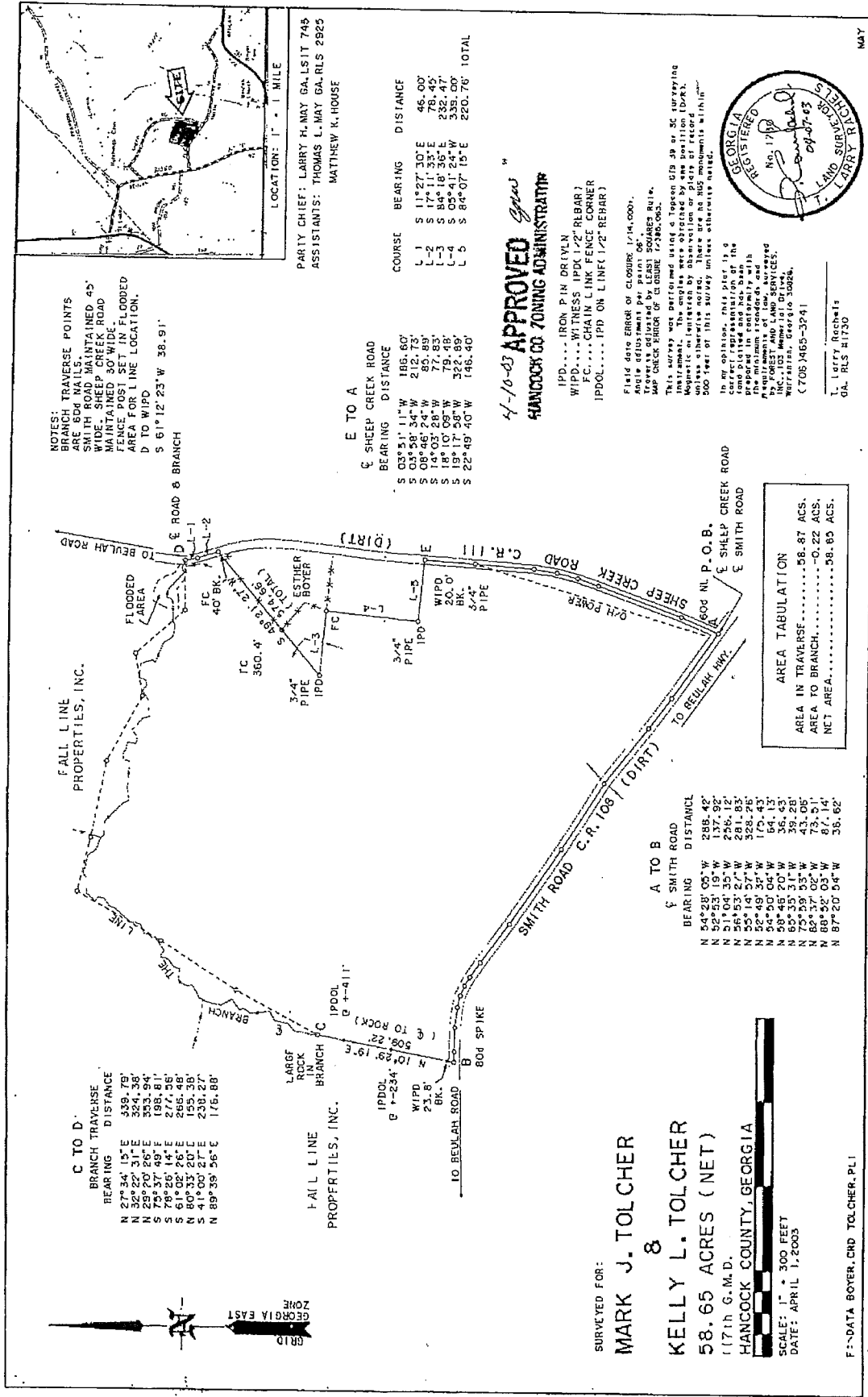


Entered of Record this 9th day of May, 2003, LeRoy S. Wiley, CSC

GRAPHIC SCALE - FEET
 SCALE 1"=150'
 PIEDMONT SURVEYING COMPANY, P.O. BOX 208 CRAWFORD, GEORGIA TEL 706-743-8634 FAX 706-743-378



NOTES:
 BRANCH TRAVERSE POINTS ARE 600 NAILS MAINTAINED 45' WIDE SHEEP MAINTAINED 45' WIDE SHEEP MAINTAINED 45' FENCE POST SET IN FLOODED AREA FOR LINE LOCATION.
 D TO WIPO
 S 61° 12' 23" W 38.91'

E TO A

BEARING	DISTANCE
S 03° 51' 11" W	188.60'
S 03° 58' 34" W	212.73'
S 18° 05' 24" W	49.89'
S 18° 10' 08" W	79.98'
S 19° 17' 58" W	322.89'
S 22° 49' 40" W	148.40'

4-10-03 APPROVED
 HANCOCK CO ZONING ADMINISTRATOR

IPD..... IRON PIN DRIVEN
 WIPO..... WITNESS IPD (1/2" PLBAR)
 FC..... CHAIN LINK FENCE CORNER
 IPDOL..... IPD ON LINE (1/2" REBAR)

FIELD DATA ERROR OF CLOSURE 1/14,000.
 ANGLE ADJUSTMENT PER BEAM 06".
 TRAVERSES ADJUSTED BY LEAST SQUARES METHOD.
 S&P CREEK BRIDGE OF CLOSURE 1/2386,083.

This survey was performed using a Topcon 575 3d or 3d surveying instrument with a 2" prism mounted on a Leica Tripod. Magnetic or instrument error adjustment or other error was not made unless otherwise noted. There are no 805 monuments within 500 feet of this survey unless otherwise noted.

In my opinion, this plat is a true and correct representation of the land described and has been prepared in conformity with the laws and regulations of the State of Georgia. My commission expires on 12/31/03. I am a member of the National Association of Professional Surveyors, Inc. (NASPS) and the Georgia Surveyors Association (GSA).

LEROY S. WILEY
 SURVEYOR
 No. 179
 04-07-03



C TO D

BEARING	DISTANCE
N 27° 34' 15" E	439.79'
N 32° 22' 31" E	324.39'
N 29° 20' 26" E	353.94'
S 75° 37' 49" E	198.81'
S 78° 26' 14" E	277.38'
S 61° 02' 26" E	266.48'
S 41° 03' 27" E	238.27'
N 89° 39' 56" E	176.88'

FALL LINE PROPERTIES, INC.

BEARING	DISTANCE
N 10° 29' 19" E	508.22'
S 1° 23' 41" E	102.29'
S 1° 23' 41" E	23.8'

A TO B

BEARING	DISTANCE
N 54° 28' 05" W	288.49'
N 52° 53' 19" W	137.92'
N 51° 04' 35" W	256.12'
N 56° 53' 27" W	281.93'
N 55° 14' 37" W	328.76'
N 52° 49' 50" W	170.43'
N 58° 48' 20" W	38.43'
N 63° 35' 31" W	39.28'
N 75° 59' 35" W	43.05'
N 82° 37' 02" W	73.51'
N 88° 52' 03" W	87.14'
N 87° 20' 04" W	36.62'

AREA TABULATION

AREA IN TRAVERSE.....	68.87 ACS.
AREA TO BRANCH.....	0.22 ACS.
NET AREA.....	68.65 ACS.

SURVEYED FOR:
MARK J. TOLCHER & KELLY L. TOLCHER
 58.65 ACRES (NET)
 (17th G.M.D.)
 HANCOCK COUNTY, GEORGIA

SCALE: 1" = 300 FEET
 DATE: APRIL 1, 2003

F:\DATA BOYER, CHD TOLCHER, PL1

L. WILEY, Registrar
 GA. RLS #1720